

Manual  
English

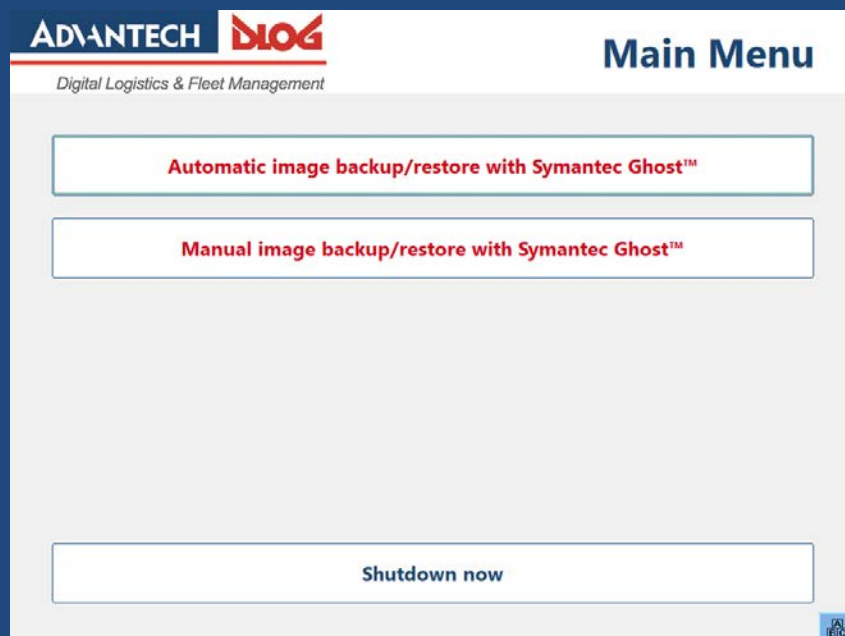
ADVANTECH

DLOG

Digital Logistics & Fleet Management

# ADLoG USB Recovery Stick for ADLoG Terminals

Manual V1.00 (EN)



**IMPORTANT:**  
**Read this manual carefully.**  
**Keep for future reference.**

The software and hardware designations as well as the brand names used in this documentation are in most cases also registered trademarks and are subject to the international law (trademark, brand and protection laws).

Windows® is a registered trademark of Microsoft Corporation in the United States (US) and other countries.

Symantec, the Symantec logo, and Symantec Ghost™ are trademarks of Symantec Corporation 20330 Stevens Creek Blvd., Cupertino, CA 95014, USA.

We recognize all national and international trademarks and product names.

DLoG GmbH is not responsible for the accessibility of the websites of other parties and is not liable for the content of external links. The content and accessibility of the linked websites are in the responsibility of their operators. This applies to all links and website content included in this guide.

We reserve the right to modify the contents of this document at any time and without prior notice.

DLoG GmbH assumes no liability for technical inaccuracies, typographic errors or faults in this documentation. DLoG GmbH also assumes no liability for damages caused directly or indirectly by the delivery, performance or usage of this material.

This documentation is protected by copyright. Duplication, in whole or in part, is not permitted without prior written approval of DLoG GmbH.

Manual title:	ADLoG USB Recovery Stick
Manual completed on:	June 04, 2018
Manual version:	V1.00

© Copyright 2018  
By DLoG GmbH  
All rights reserved

Advantech-DLoG  
DLoG GmbH  
Industriestraße 15  
D-82110 Germering  
(+49) 89 / 41 11 91 0  
[info@advantech-dlog.com](mailto:info@advantech-dlog.com)  
[www.advantech-dlog.com](http://www.advantech-dlog.com)

# Content

- 1. INTRODUCTION ..... 4
  - 1.1. Target group / qualification .....4
  - 1.2. Described version .....4
  - 1.3. Current Manual versions available on our website.....4
  - 1.4. Design elements in the manual .....4
  
- 2. IMPORTANT NOTES ..... 5
  - 2.1. Intended Use .....5
  - 2.2. Scope.....5
    - 2.2.1. Advantech-DLoG devices .....5
  - 2.3. Symantec Ghost™ software version .....6
  - 2.4. Content of ADLoG USB Recovery Stick.....6
  
- 3. USING THE USB RECOVERY STICK..... 7
  - 3.1. Main Menu .....7
  - 3.2. Automatic image backup/restore with Symantec Ghost™ .....8
    - 3.2.1. Create image .....9
    - 3.2.2. Restore image .....11
  - 3.3. Manual image backup/restore with Symantec Ghost™ .....13
  
- 4. TECHNICAL CUSTOMER SUPPORT ..... 14
  
- 5. TABLE OF FIGURES ..... 15

# 1. Introduction

## 1.1. Target group / qualification

---

**NOTICE: Physical damage**

The ADLoG USB Recovery Stick may only be used by skilled personnel, for example by IT administrators. Improper usage will void any warranty of the DLoG GmbH for the USB Recovery Stick and the respective ADLoG device.

## 1.2. Described version

This manual describes ADLoG USB Recovery Stick Version 1.00.

## 1.3. Current Manual versions available on our website

You can find the latest versions of our manuals on our website:  
[www.advantech-dlog.com](http://www.advantech-dlog.com) -> Menu *Download* -> *Products*.

## 1.4. Design elements in the manual

The following symbols and signal words are used in the manual:

---

**NOTICE: Physical damage**

Information about possible physical damage

---

**TIP/NOTE**

Tips/notes about how to handle or use the product



Note about additional information in manuals

## 2. Important notes

### 2.1. Intended Use

The USB Recovery Stick is intended to be used for creating and restoring Symantec Ghost™ Images of Microsoft Windows Operating Systems on the Advantech-DLoG devices defined in manual section **Scope**.

As images can't be created/restored online, the USB Flash drive (UFD) is bootable and intended to be used this way.

As operating system the Windows Pre-Installation Environment (WinPE) is used.

### 2.2. Scope

#### 2.2.1. Advantech-DLoG devices

The ADLoG USB Recovery Stick described in this manual, applies to the following Advantech-DLoG devices:

- DLT-V72 Series
- DLT-V83 Series
- DLT-V6210
- DLT-V4108
- DLT-M8110 (see notes below)

You have to adapt some BIOS Settings for using the ADLoG USB Recovery Stick on the **DLT-M8110**:

Step 1:

- ⇒ Start BIOS menu.
- ⇒ Select BIOS setting **Advanced** → **CSM Configuration** → **Boot option filter**.
- ⇒ Activate **Legacy only** instead of **UEFI and Legacy**.

Step 2:

- ⇒ Select BIOS setting **Boot** → **Hard Drive BBS Priorities** → **Boot Option 1**.
- ⇒ Activate **USB Stick** as **Boot Option 1**.

Step 3:

- ⇒ Save the BIOS settings.
- ⇒ Shutdown and reboot the DLT-M8110 device.

DLT-M8110 is rebooting from the USB stick as default now.

---

#### **NOTICE: Physical damage**

Functionality of the ADLoG USB Recovery Stick on other devices cannot be guaranteed by DLoG GmbH.

### 2.3. Symantec Ghost™ software version

Ghost™ software version **12.0.0.10514** is available on the ADLoG USB Recovery Stick.

#### NOTICE: Physical damage

Functionality of the ADLoG USB Recovery Stick can only be guaranteed using this Ghost™ software version **12.0.0.10514**.

⇒ Always use this version for creating and restoring images with the ADLoG USB Recovery Stick.

Otherwise a proper and accurate functionality of the ADLoG USB Recovery Stick can't be guaranteed.

### 2.4. Content of ADLoG USB Recovery Stick

ADLoG USB Recovery Stick contains the following directories:

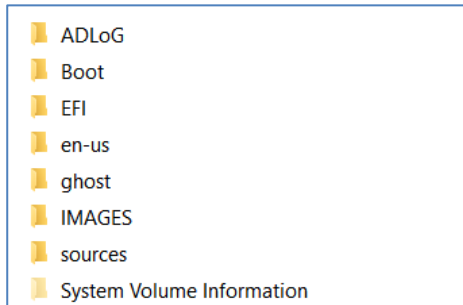


Figure 2.1: Content of ADLoG USB Recovery Stick

Relevant for customer's use:

Ghost directory	
File(s):	Purpose:
ghost.exe , version 12.0.0.10514 (part of ghost solution suite 3.2)	Exe file for creating and restoring images.
Symantec_Ghost_Standard_Tools_3_2.msi (part of ghost solution suite 3.2)	Installer for copying some Symantec Ghost™ utilities to an Administrator's PC. Example: a Ghost file explorer for editing Ghost™ images, if necessary. Please find detailed information in the Symantec Ghost™ Online Help available after installation.

IMAGES directory
Purpose:
Default path for images created with Ghost.exe.

### 3. Using the USB Recovery Stick

The USB Recovery Stick is intended to be used for creating and restoring Symantec Ghost™ Images of Microsoft Windows Operating Systems on the Advantech-DLoG devices defined in manual section **Scope**.

As images can't be created/restored online, the USB Flash drive (UFD) is bootable and intended to be used this way.

As operating system the Windows Pre-Installation Environment (WinPE) is used.

To boot an ADLoG device from the UFD the stick has to be connected to an USB port.

Therefore it might be necessary to remove the cable cover respectively the antenna cap.

On a device without a touch screen connecting a keyboard and/or mouse will be necessary too.

After booting a device from the UFD the user will be guided through a simple full screen menu.

#### 3.1. Main Menu

When the boot process is completed, the user should see the following main menu:

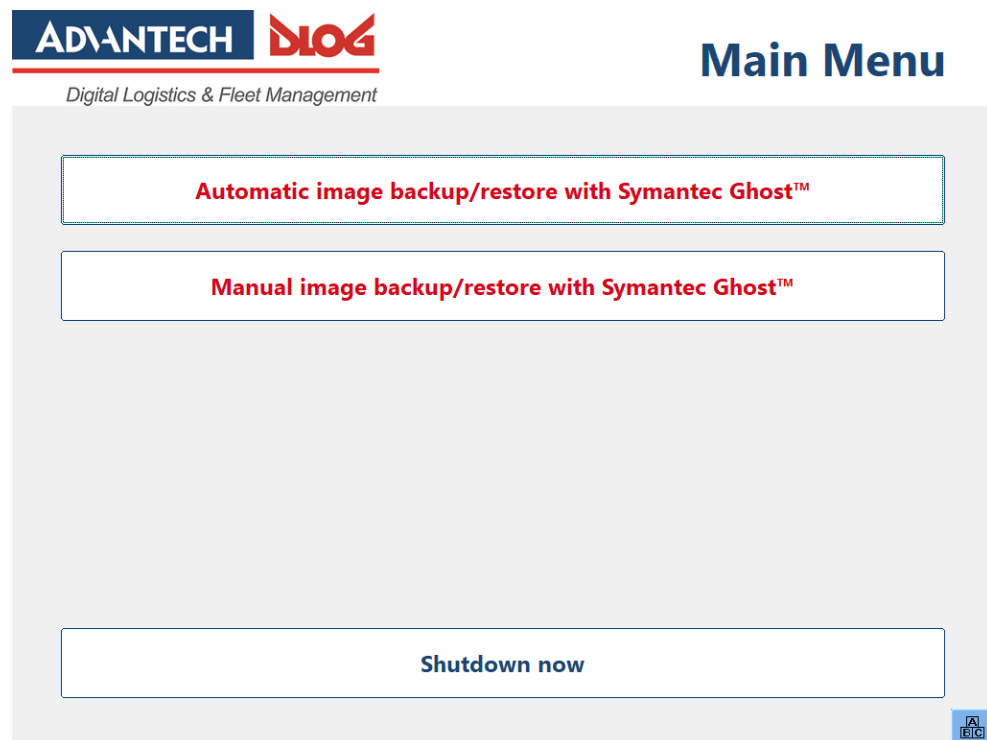


Figure 3.1: Main menu

Item	Description
Automatic image backup/restore with Symantec Ghost™	Via this menu item only an image file name has to be specified for backup/restore.
Manual image backup/restore with Symantec Ghost™	Choosing this menu item gives more flexibility respectively full control over Symantec Ghost™.
Shutdown now	Through this menu item WinPE will be shut down.

If no storage medium is found during boot up the user will see an error message box instead of the main menu.

### 3.2. Automatic image backup/restore with Symantec Ghost™

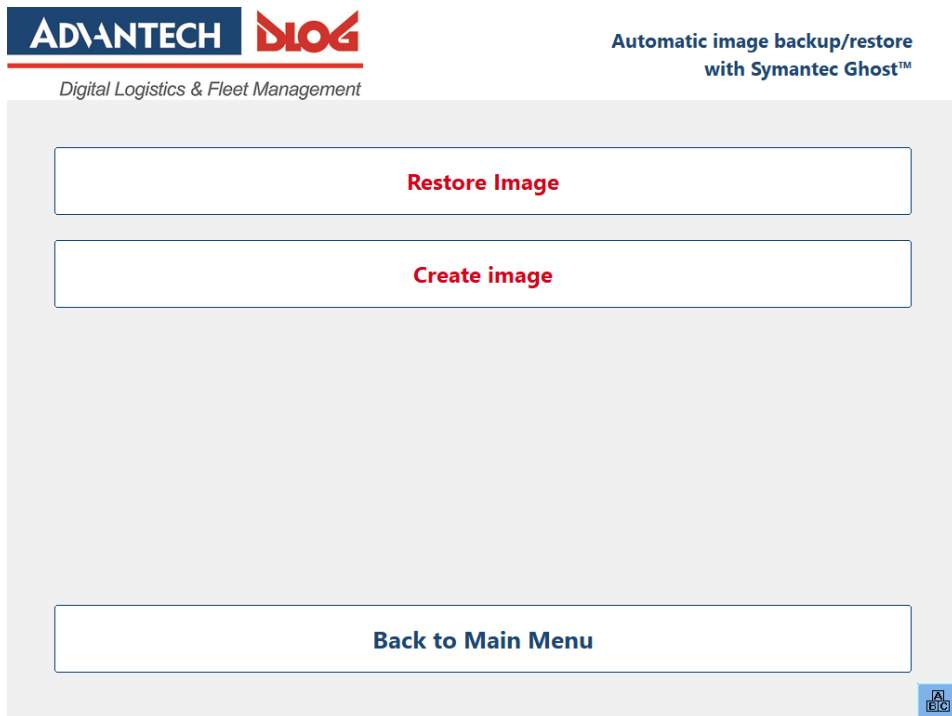


Figure 3.2: Restore image or create image

Item	Description
Restore Image	Via this menu item only an image file has to be chosen for restore.
Create Image	Via this menu item only an image file name has to be specified for backup creation. This button will be grayed out and not clickable if no partition on the storage medium could be found during boot up.
Back to Main Menu	To return to the Main Menu.



### 3.2.1. Create image

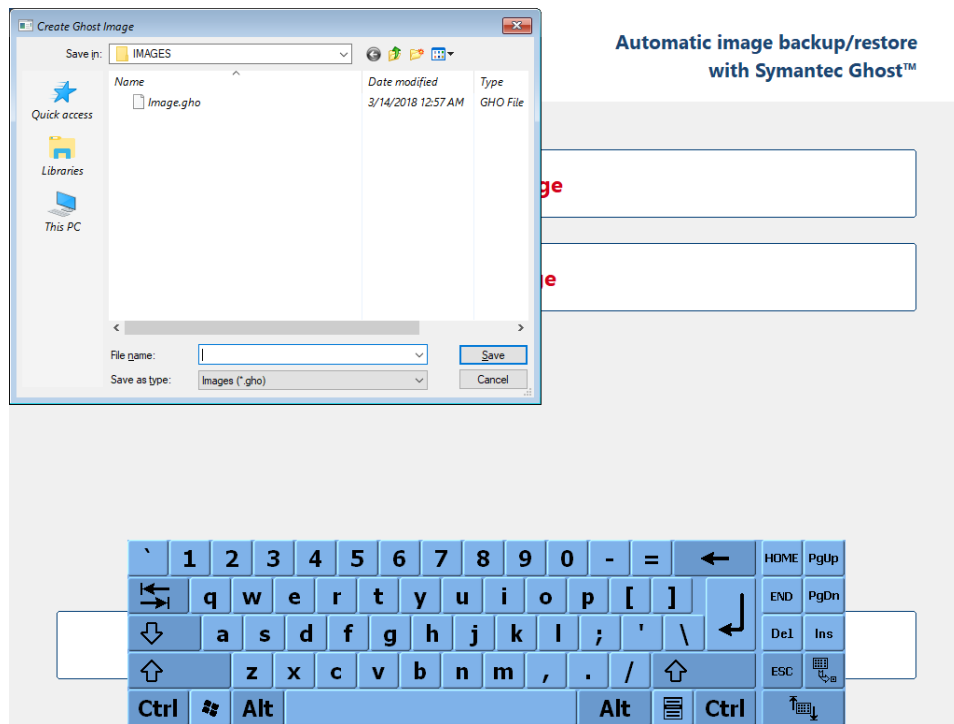


Figure 3.3: Create image

A path and filename for the image to be created must be specified. As default path the **IMAGES** folder on the root directory of the UFD is used.

For filename input either a USB keyboard has to be connected to the device or the software keyboard can be used through the touch or a mouse.

After pressing **Save**, Symantec Ghost™ and the creation process will start immediately.

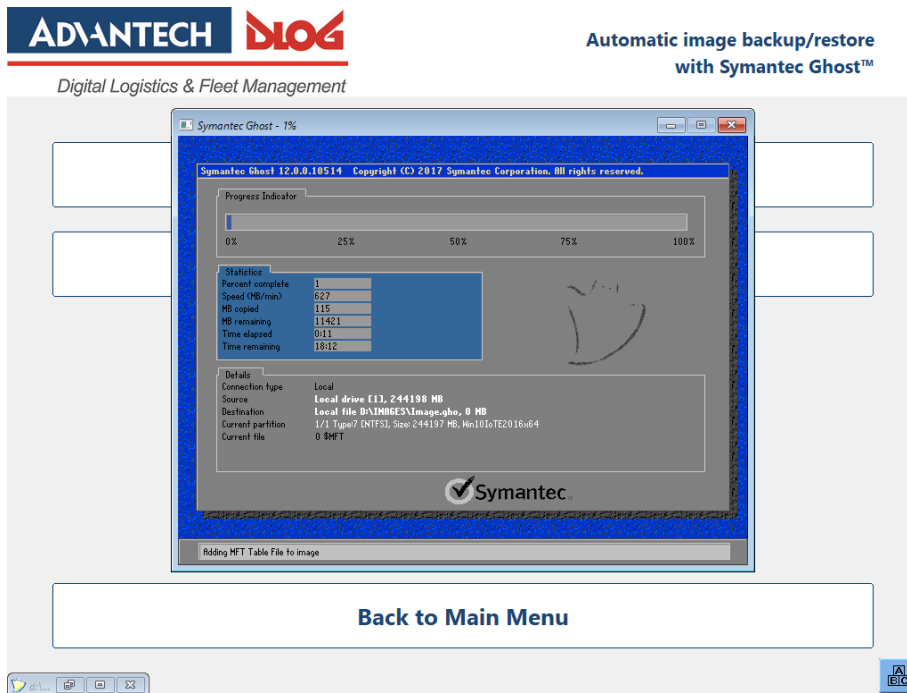


Figure 3.4: Create image – creation process

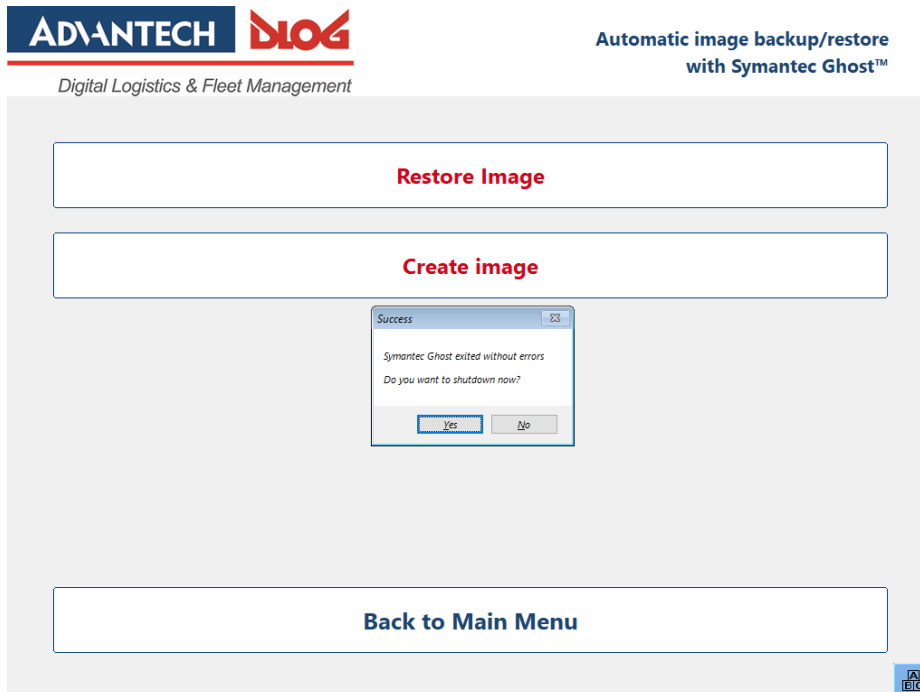


Figure 3.5: Create image – system shutdown

After image creation is complete a success message box will pop up. Choosing **Yes** relevant to the question will lead to an immediate shutdown.

### 3.2.2. Restore image

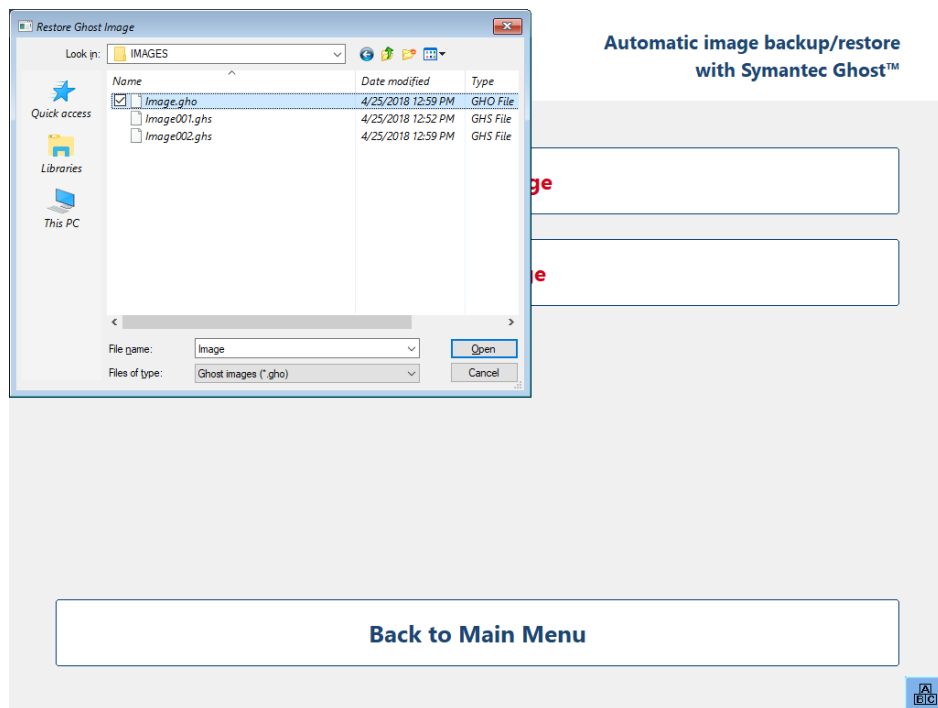


Figure 3.6: Restore image

A Symantec Ghost™ file with the extension **.gho** has to be chosen for restore. By default the **IMAGES** folder on the root directory of the UFD is opened for browsing. After pressing **Open**, Symantec Ghost™ and the restore process will start immediately.

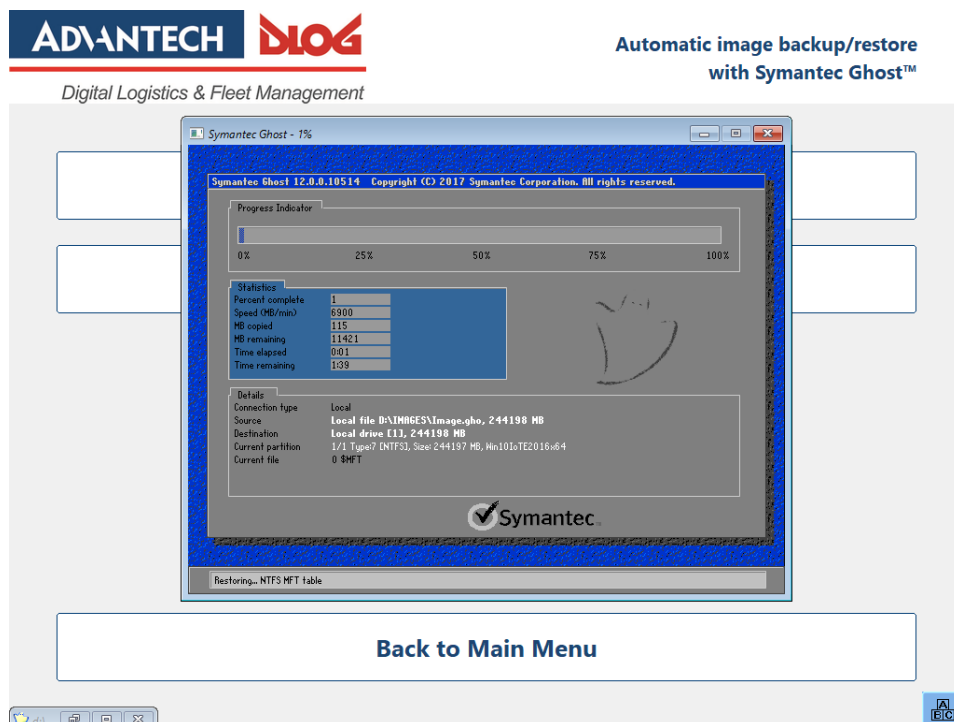


Figure 3.7: Restore image – creation process

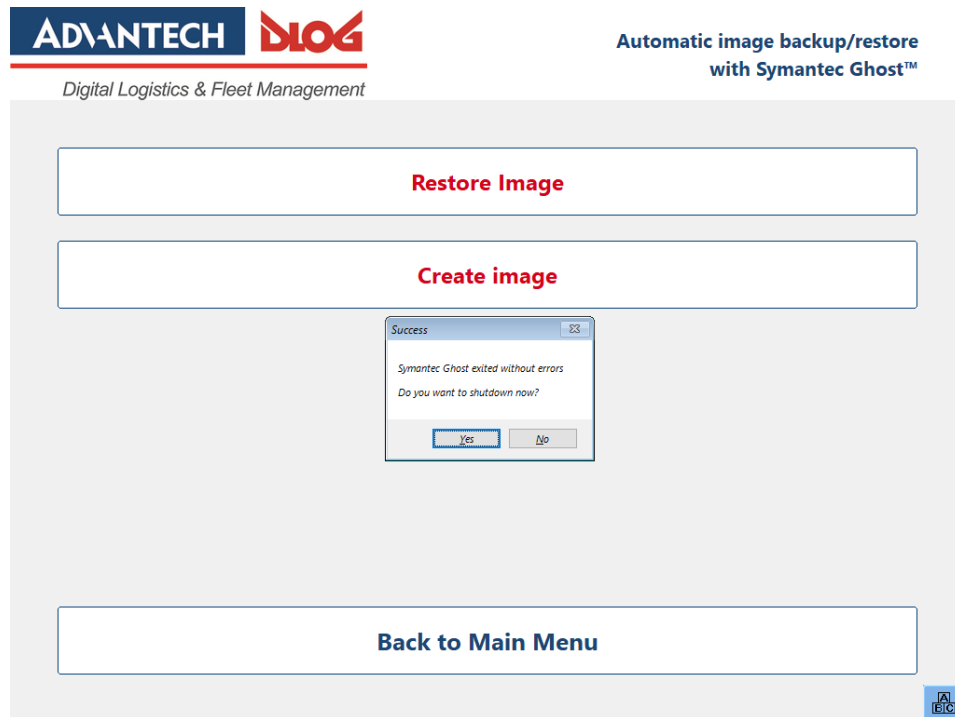


Figure 3.8: Restore image – system shutdown

After image restore is complete a success message box will pop up. Choosing **Yes** relevant to the question will lead to an immediate shutdown.

### 3.3. Manual image backup/restore with Symantec Ghost™

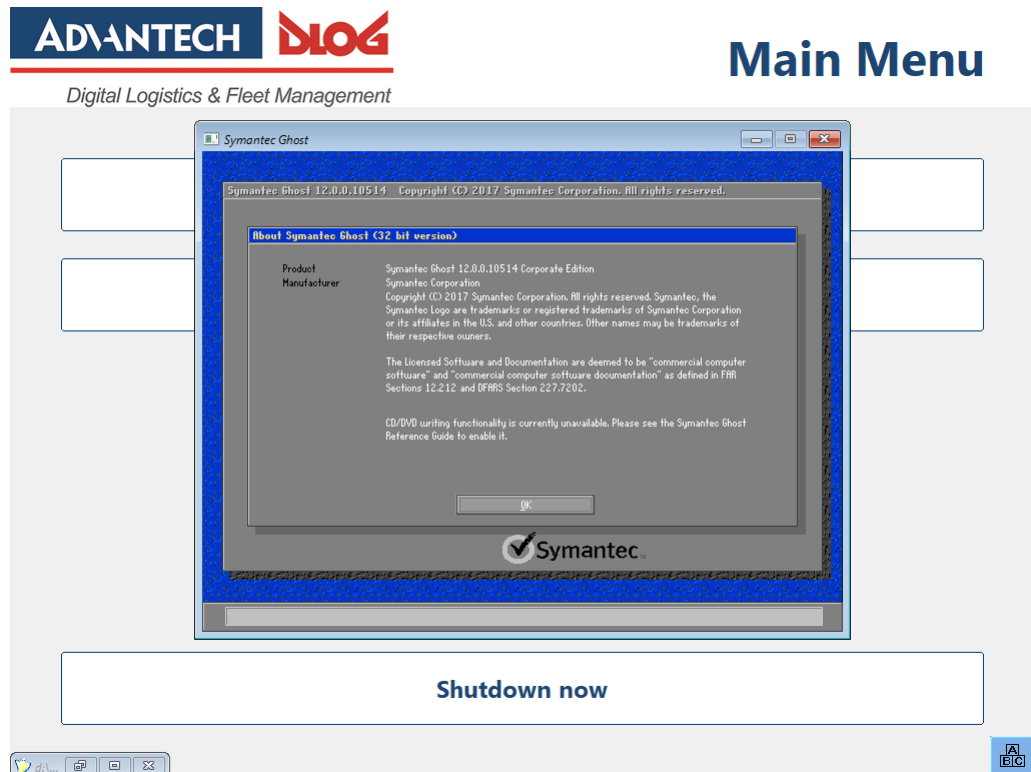


Figure 3.9: Automatic backup/restore process

In some cases it might not be possible or useful to choose the **Automatic backup/restore** process. E.g. if an image with more than one partition is to be restored and the size of the partitions has to be specified exactly or if an image has to be restored on another storage medium than the primary boot medium.

In this case the Symantec Ghost™ software can be fully operated by choosing the **Manual image backup/restore** menu option.

Detailed information on how to use Symantec Ghost™ and the whole Symantec Ghost™ Solution Suite can be found on the Symantec support website: <https://support.symantec.com/>

## 4. Technical customer support

### **Advantech-DLoG Service & Support**

Find out about our worldwide and comprehensive service offering:

Web: [www.advantech-dlog.com/en/service-and-support/](http://www.advantech-dlog.com/en/service-and-support/)

E-Mail: [aeu.helpdesk@advantech.com](mailto:aeu.helpdesk@advantech.com)

Phone: +49 (0)89 / 41 11 91 999



### **Manufacturer address**

Advantech-DLoG  
DLoG GmbH  
Industriestraße 15  
D-82110 Germering  
Germany

Web: [www.advantech-dlog.com](http://www.advantech-dlog.com)

E-Mail: [info@advantech-dlog.com](mailto:info@advantech-dlog.com)

## 5. Table of figures

Figure 2.1: Content of ADLoG USB Recovery Stick .....	6
Figure 3.1: Main menu.....	7
Figure 3.2: Restore image or create image .....	8
Figure 3.3: Create image.....	9
Figure 3.4: Create image – creation process.....	10
Figure 3.5: Create image – system shutdown .....	10
Figure 3.6: Restore image .....	11
Figure 3.7: Restore image – creation process.....	11
Figure 3.8: Restore image – system shutdown.....	12
Figure 3.9: Automatic backup/restore process .....	13