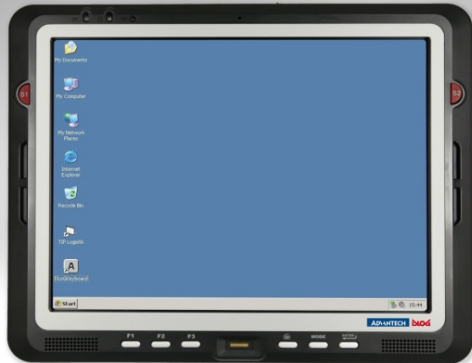


S10A



10.4" Semi-rugged Tablet PC with Intel® Atom™ Z530XL Processor

- Intel® Atom™ Z530 1.6 GHz processor
- 10.4" display with touch screen
- Rich array of I/O ports support a variety of applications
- IP54-certified , 3 ft drop rating from 90 cm, MIL-STD-810F
- Optional GPS / WWAN
- Five function keys
- High capacity Li-ion battery

Introduction

The S10A is a semi-rugged mobile tablet PC featuring a 10.4" XGA resolution TFT LCD panel and an Intel Atom Z530XL processor. It comes with 802.11 b/g/n WiFi, a 2M pixel camera, fingerprint recognition, and Bluetooth 2.0 built-in. S10A's optional devices include GPS with antenna and a 3G module with antenna. The S10A tablet PC is a fully functional communication device suitable for any indoor and outdoor application.

Specification

System	CPU	Intel® Atom Z530XL 1.6 GHz
	Memory	1 GB DDRII
	Storage	4 GB CF Card
Dimensions/Weight	264 x 213 x 18 mm / 10.4 x 8.4 x 0.7 in 1,2 kg / 2.64 lbs	
Display	10.4" touch screen display, XGA 1024 x 768	
Touch Screen	4-wire resistive	
Software	Operating system	MS® Windows® XP Embedded
I/O Port	1 x RS-232, 1 x VGA DB15	
	2 x USB 2.0	
	1 x SD card slot, 1 x PCMCIA Type II slot, supports Cardbus 2.1	
	1 x docking connector	
	1 x DC-in	
	2 x 1 W internal stereo speakers, 1 x Audio in 1 x internal mono microphone, 1 x Audio out SIM card slot (option)	
Communication	WLAN	802.11 b/g/n
	WWAN	GPRS/3G/3.5G (option)
	Camera	2M pixel camera
	GPS	GPS module with antenna (option)
	GPRS	GPRS module (option)
	Bluetooth Identification	Bluetooth V2.0 + EDR (Enhanced Data Rate) fingerprint
Power	Battery	rechargeable internal Li-ion smart battery, 11.1 V @ 1900 mAh (up to 2 operating hours) optional external battery, 11.1 V @ 3800 mAh (up to 4 operating hours)
	Power adapter	universal AC 100 V~240 V; 50~60 Hz input 19 V, 3.16 A output
Environmental	Rugged certificate	IP54 rating (all), 3 foot drop polywood, MIL-STD-810F
	Certifications	CE, FCC, VCCI, BSMI, C-tick, CCC, DO-160, CB, UL, ROHS, WEEE
	Operating temperature	0 to +40 °C / 32 to 104 °F
Accessories	external battery	
	docking station	
	Scanner	1D barcode scanner
	Card reader	MSR card reader

Datasheet Version 5.03 – Information in this document is subject to change without prior notice. The software and hardware designations used in this text are in most cases also registered trademarks and are thus subject to law.